



🌐 [www.safetyadserv.com](http://www.safetyadserv.com)

✉ [admin@safetyadserv.com](mailto:admin@safetyadserv.com)

☎ 02 4739 9748

📍 RTO #91141

## Services & Plant Safety

We are an RTO delivering nationally accredited training tailored to meet the specific requirements of civil construction projects. Our specialist trainers are highly qualified and draw on a wealth of industry experience. Programs now available include:

### Identify, Locate & Protect Underground Services - RIICCM202E

DURATION: HALF DAY

A short introductory program for civil construction workers/plant operators who need the skills & knowledge to identify, locate and protect underground services, such as water, power, gas, communications, etc. Course content incorporates harmonised legislation/guides, DBYD and 'industry best practice' processes, including use of locator.

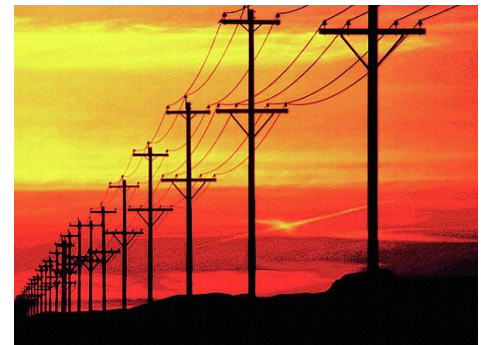


### Work Safely Around Electrical Sources, Services & Assets - CPCCCM3003

DURATION: 1 DAY  
ANNUAL REFRESHER  
REQUIRED

A one day program targeting **safety observers**, supervisors & plant operators working with or around close proximity to overhead & underground power sources/ services.

Content reflects WHS harmonised legislation & new guidance material.



### Work as a Safety Observer/Spotter – RIIRTM203D

DURATION: 1 DAY

Designed for mobile plant **spotters** & drivers/operators who coordinate safe movement around multiple plant operations on construction & infrastructure projects.

Theory & practical assessments can be contextualised to suit company processes and specific project requirements. Course content reflects WHS legislation & new guidance material.



**Training Venues: 19 & 23 Pullman Place, Emu Plains NSW 2750**